

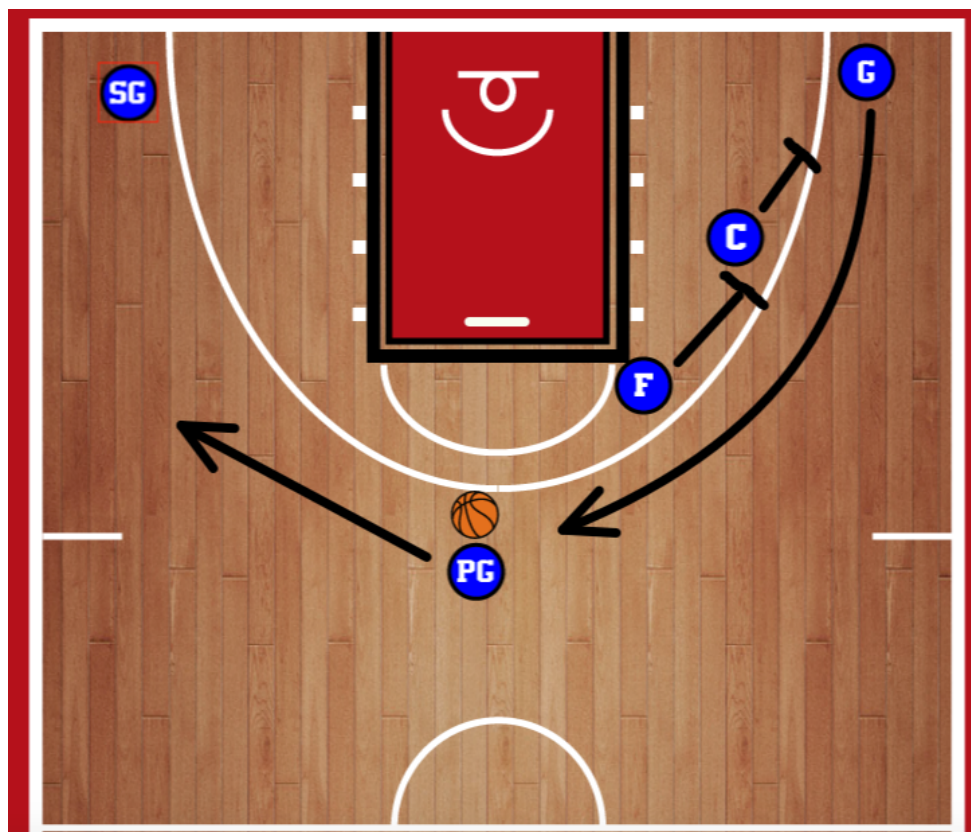
**David Blatt  
Euro Sets**

# ARETE HOOPS

In my time playing overseas here is one of my favorite sets that I've come across because of its flexibility, movement, and variety of options. Although NBA Cleveland Cavs coach David Blatt doesn't coach overseas anymore, this is the type of stuff he used to win his Euroleague title and 5 Israeli League Championships.

The following are the some of the primary options you can run with this "Euro Set", but as you'll see, any coach can adjust the spacing and timing depending on their personnel. Click here to download the entire set as a PDF.

**The initial alignment starts with the point guard dribbling the wing and the guard coming off a double staggered on to the top of the key.**



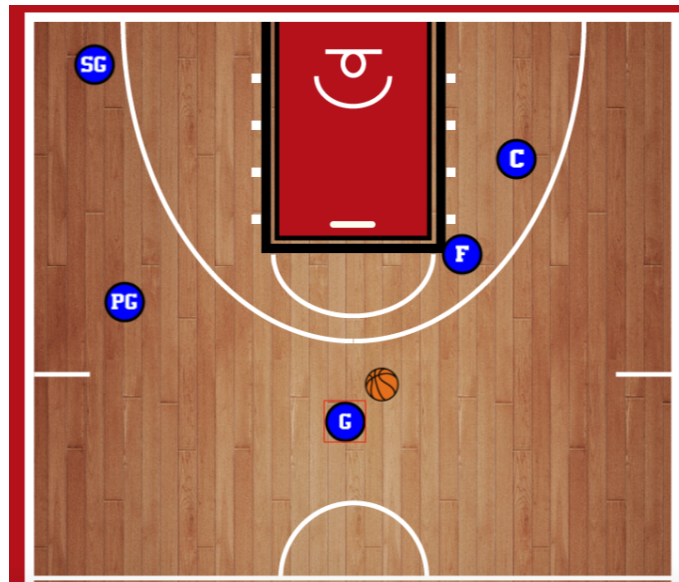
Excellence - Imagination - Discipline - Greatness

[www.AreteHoops.com](http://www.AreteHoops.com)

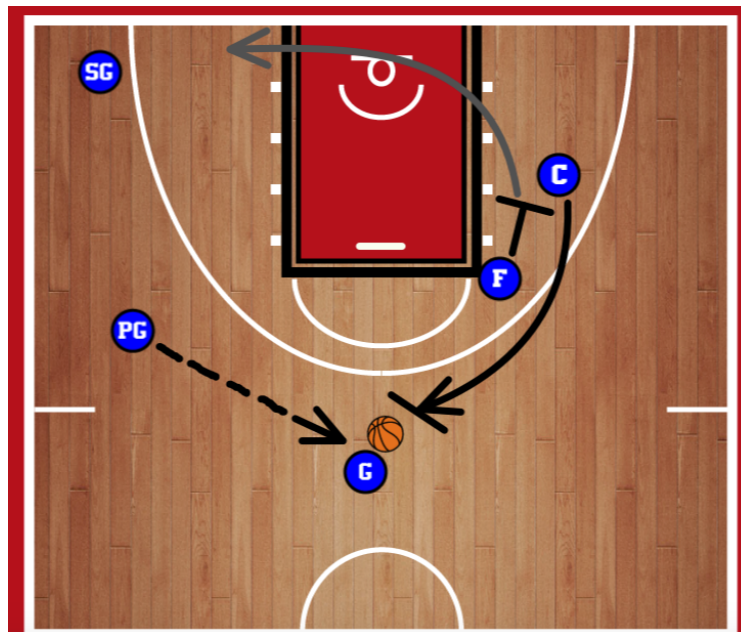
[aretehoops@gmail.com](mailto:aretehoops@gmail.com)

# ARETE HOOPS

Below is the basic spacing for the rest of the options in this particular set. Out of this alignment we have a ton of nifty options



**Option 1:** PG swings the ball to G at the top of the key and then C runs to set a high ball-screen for G coming off to the open side of the floor. After F screens for C they should space out to the opposite side short corner.



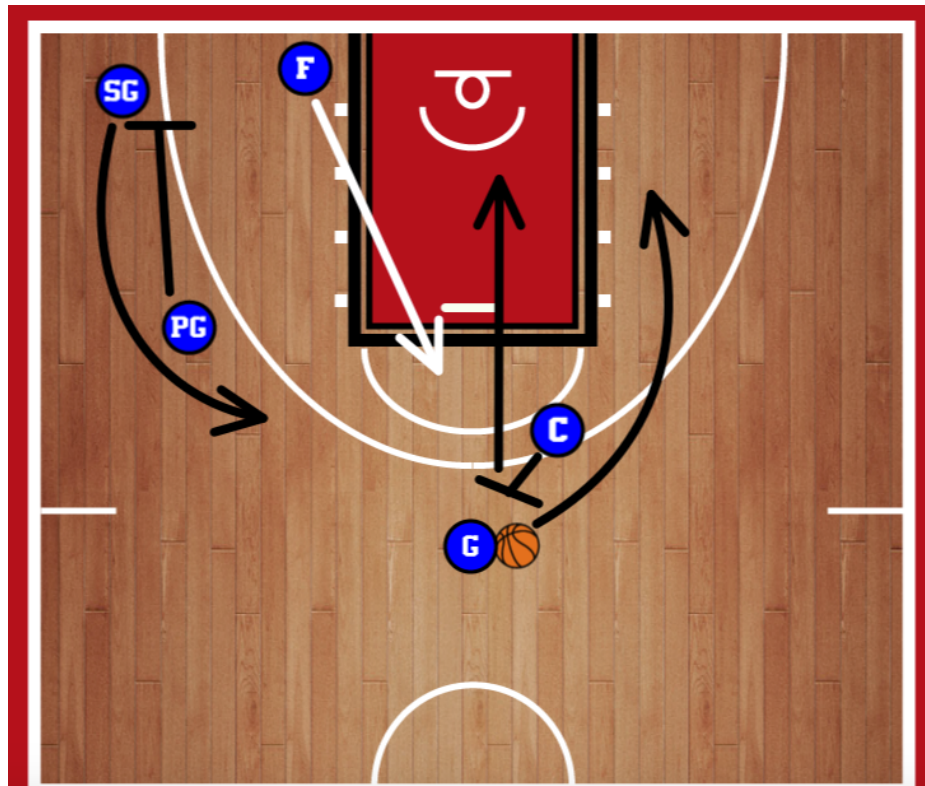
Excellence - Imagination - Discipline - Greatness

[www.AreteHoops.com](http://www.AreteHoops.com)

[aretehoops@gmail.com](mailto:aretehoops@gmail.com)

# ARETE HOOPS

**Option 1:** As G drives to the open side of the floor, C should dive to the rim for an easy dish if C's defender overhelps on the pick and roll. Alternately, F should fill the high post to draw his defender away from helping on the pick and roll. Lastly, PG should keep the backside occupied by setting a down screen for SG to come to the wing.



**Option 1:** This is the visual representation of all the options G has coming off the high ball screen (in addition to scoring themselves). A great option to get a good player going downhill with a lot of scoring options.

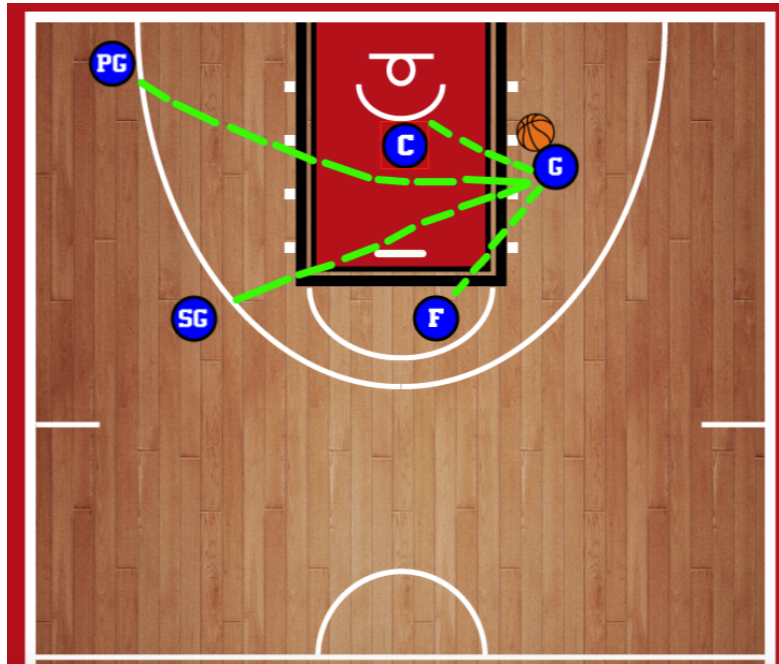
Excellence - Imagination - Discipline - Greatness

[www.AreteHoops.com](http://www.AreteHoops.com)

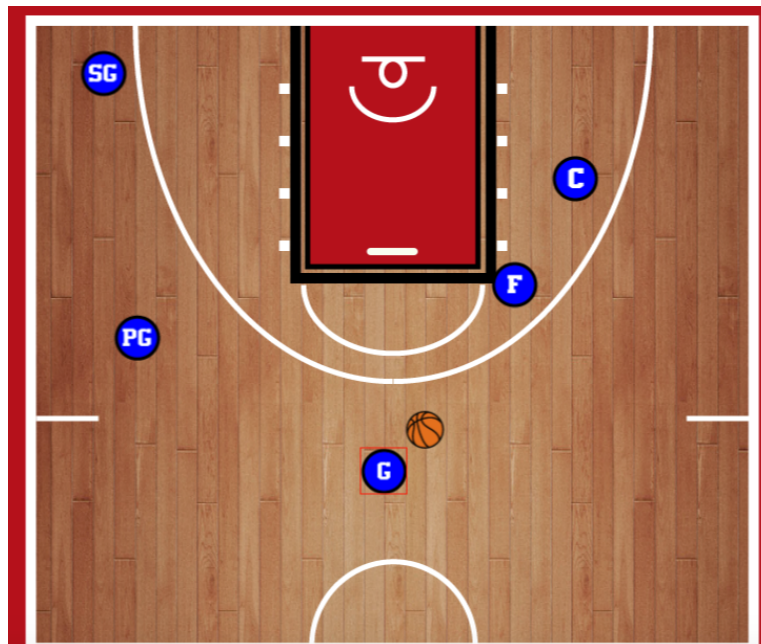
[aretehoops@gmail.com](mailto:aretehoops@gmail.com)



# ARETE HOOPS



**Option 2 :** Going back to the original alignment, the second option is for SG in the corner coming off a gate screen for a 3-pointer (feel free to change the screen to a double staggered along the baseline if your player prefers shooting off that)



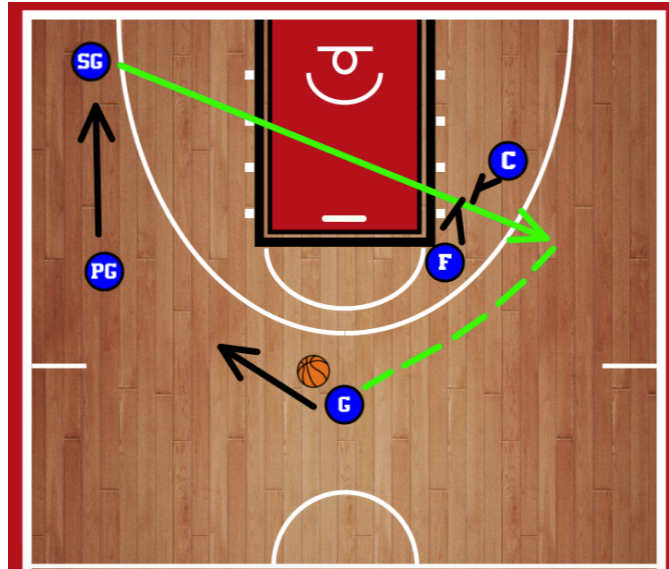
Excellence - Imagination - Discipline - Greatness

[www.AreteHoops.com](http://www.AreteHoops.com)

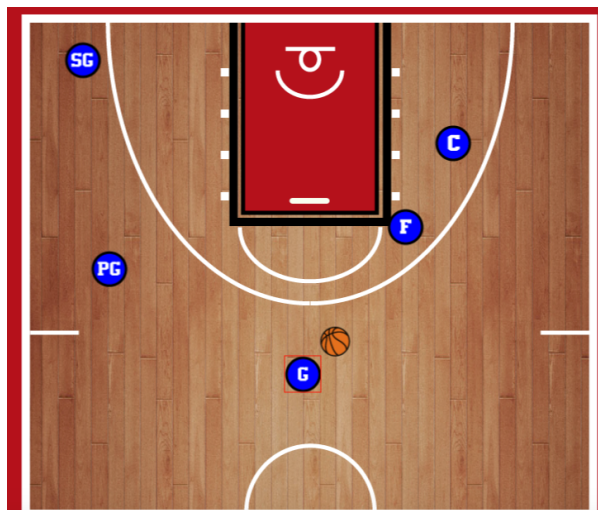
[aretehoops@gmail.com](mailto:aretehoops@gmail.com)

# ARETE HOOPS

**Option 2 :** G should dribble away from the double screen a few dribbles to create spacing as SG starts to sprint between the gate screen set by C and F. PG should replace SG in the corner for increased spacing.



**Option 3 :** The last option includes a post up option for bigger guards, a guard pick and roll, and a double stagger for a shooter. Again here is the original alignment after G comes off the double screen from F and C.



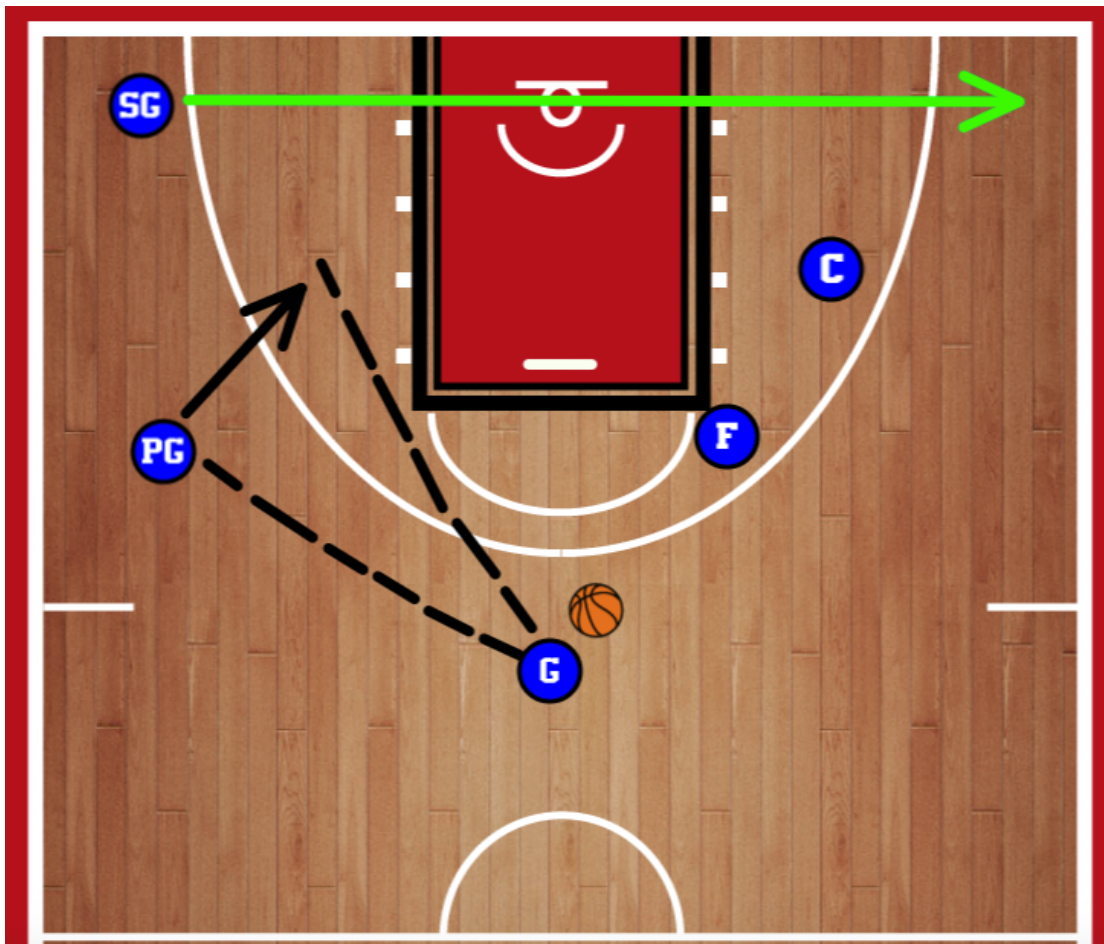
Excellence - Imagination - Discipline - Greatness

[www.AreteHoops.com](http://www.AreteHoops.com)

[aretehoops@gmail.com](mailto:aretehoops@gmail.com)

# ARETE HOOPS

**Option 3** : G has the ball at the top of key, and SG runs the baseline to leave PG on the wing with an open side of the floor. G can look to throw a backdoor pass for PG if overplayed. Otherwise G can throw the ball to PG and set a ball screen. If you have a big guard with post up skills this is a good way to take advantage of PG's smaller defender switching onto a bigger guard



**Option 3** : PG now comes off the ball screen with an option to attack the rim, exploit the mismatch with G rolling to the block, or looking for SG coming off a double staggered for a 3-pointer.

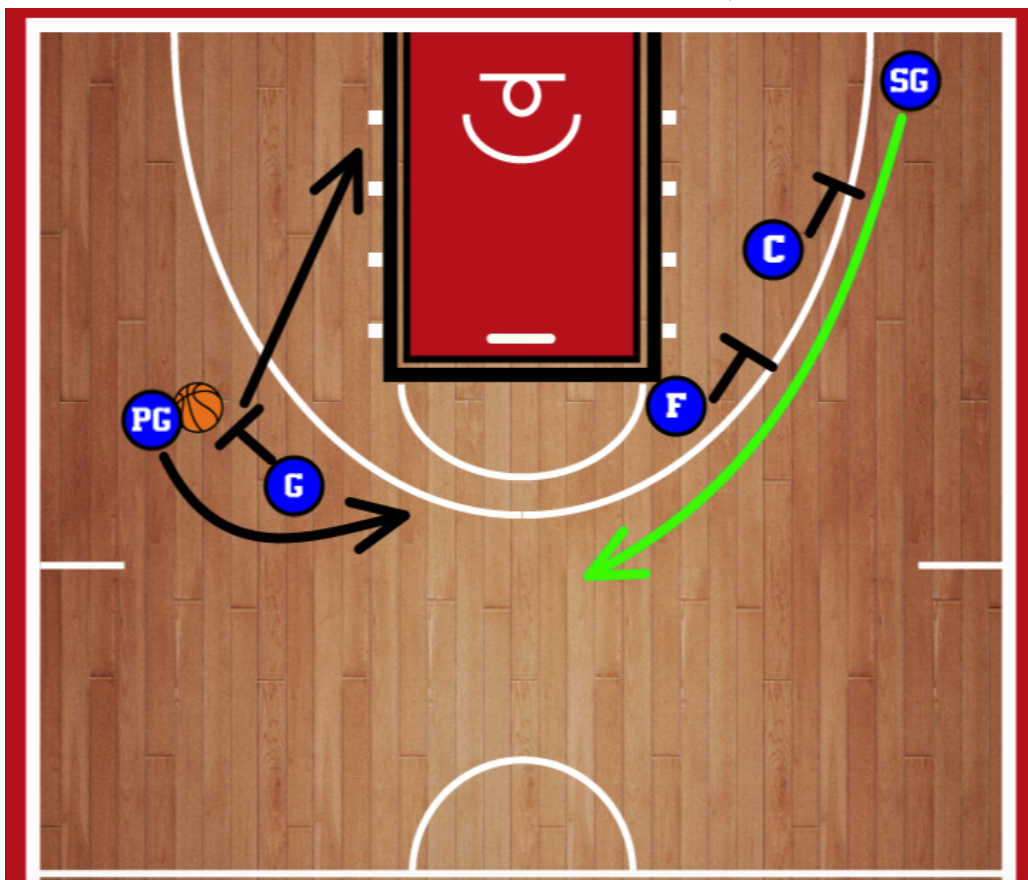
Excellence - Imagination - Discipline - Greatness

[www.AreteHoops.com](http://www.AreteHoops.com)

[aretehoops@gmail.com](mailto:aretehoops@gmail.com)



# ARETE HOOPS



**Excellence - Imagination - Discipline - Greatness**

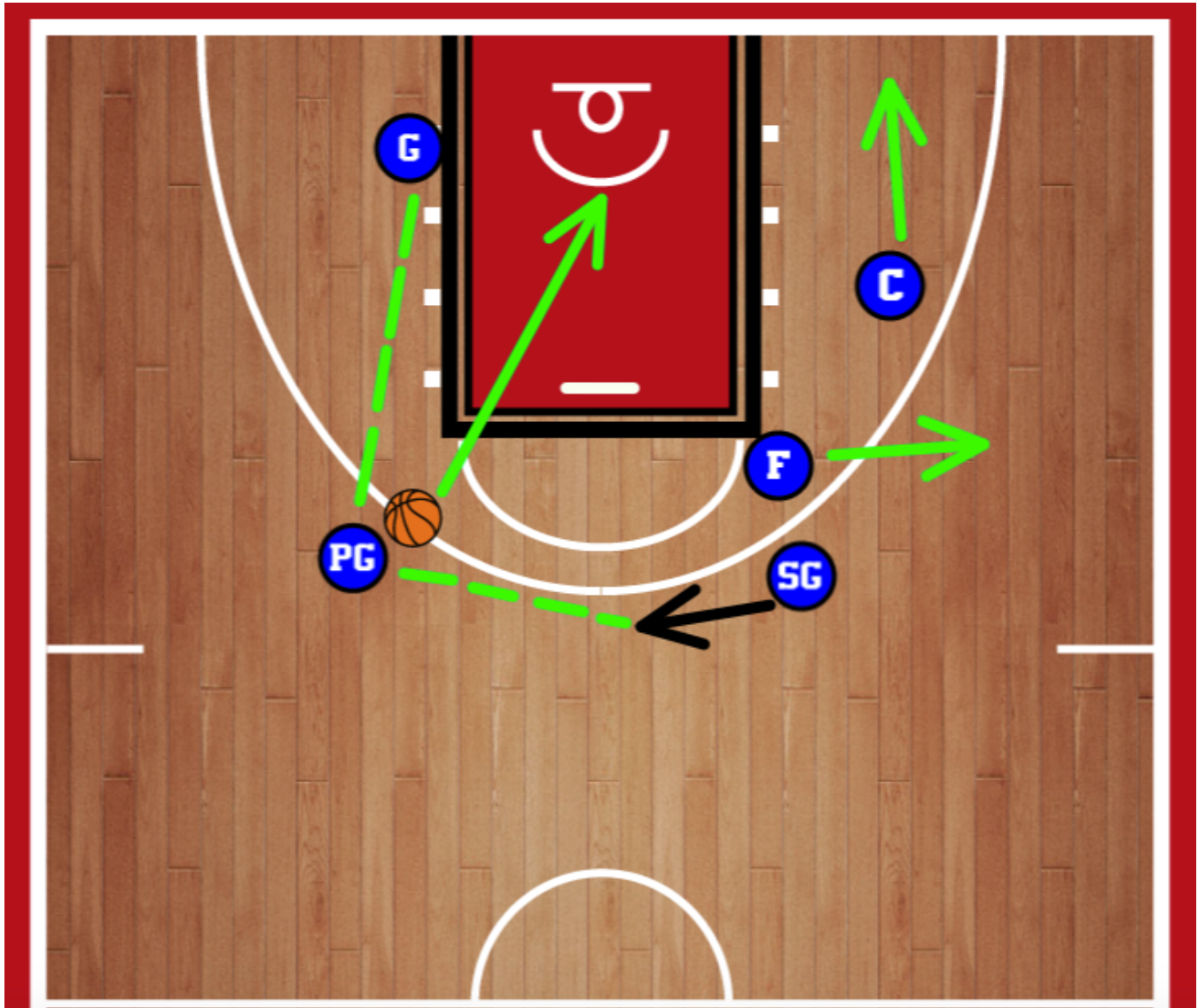
[www.AreteHoops.com](http://www.AreteHoops.com)

[aretehoops@gmail.com](mailto:aretehoops@gmail.com)



# ARETE HOOPS

**Option 3** : Here you can see all of the scoring options. After they set the double down screen for SG, F should space to the wing and C to the short corner.



Excellence - Imagination - Discipline - Greatness

[www.AreteHoops.com](http://www.AreteHoops.com)

[aretehoops@gmail.com](mailto:aretehoops@gmail.com)